

RENDERCRETE ‘RenderCrete’ BF 888+ –modified PCE based Mid-Range Admixture for concrete mixes.

ABOUT

RenderCrete BF 888+ is designed using carefully selected blend of water reducing and slump retaining poly carboxylic ethers to help concrete producers to supply a range of concrete mixes with cementitious materials up to 500 Kg/cum.

RenderCrete BF 888+ is free from any intentionally added chloride. It is compatible with any type of Cement and suitable across many brands of cements.

APPLICATIONS

RenderCrete BF 888+ imparts good workability retention for concrete mixes, enabling users to transport the mixes and use them up to 3 hrs. Typical applications are as follows:

- Ready Mix Concrete
- Site Mixed Concrete with
 - High workability
 - Congested reinforcement

DOSAGE

RenderCrete BF 888+ may be used between 0.2%-0.7% of cementitious content on a range of mixes. Dosage shall be finalized by conducting trial mix batches using the materials at site to ascertain all required properties of concrete like workability, setting and strength etc.

In some cases, a dosage outside the above range may be required.

BENEFITS



High Dispersion

Achieve high degree of workability and flowable mixes even with high fines.



Workability Retention

Provides slump retention up to 3hrs with favorable setting times.



Bleed & Segregation Control

Despite offering high workability in concrete mixes, there will be high control on bleeding and segregation.



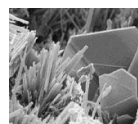
Improves Strength

Offers reduction in water-cement ratio and thereby increases strength. Reduces cement content / water content across mixes.



Help Pumping

Easing pumping concrete operations by reducing pressure on concrete pump.



Improves Microstructure

Improves ettringite formation in concrete and improves durability.

SAFETY

RenderCrete BF 888+ is non-corrosive and safe to use. However, avoid contact with eyes, mouth etc. Wash with plenty of water on contact. If accidentally ingested, seek immediate medical attention.

APPLICATION



Ready to Use

RenderCrete BF 888+ is supplied in liquid form, which shall be dispensed into concrete after dispensing at least 70% of the mix water. It shall not be added to dry cement.



Automatic Dispensing

RenderCrete BF 888+ shall be dispensed with automatic dispensers in batching plant for best results. Proper mixing time is required depending on the water reduction and batching plant employed.

TYPICAL PROPERTIES

Appearance	Light Brownish Liquid
pH	≥6
Chloride Content	<0.2%

SPECIFICATION CLAUSE

The Retarding-Super Plasticizer shall be RenderCrete RenderCrete BF 888+ based on polycarboxylic ether, conforming to IS 9103. When subjected to IR Spectra, it shall be free from any naphthalene or melamine.

CODAL STIPULATIONS

RenderCrete BF 888+ conforms to IS 9103 as Retarding Super Plasticizer and as Type F and Type G as per ASTM.

OVER DOSAGE - EFFECTS

A small over dosage of RheoZeal does not adversely affect the performance of the concrete. However a severe over dosage may result in the following:

- Bleeding and segregation
- Delay in setting of concrete

In case of an over dosage, careful inspection shall be done to understand the suitability of the given concrete for a specified application.

Due allowance in time for setting of concrete and stripping of forms will be necessary in case concrete is poured despite heavy over dosage. Please consult a RenderCrete representative, on an event of over dosage.

PACKAGING

RenderCrete BF 888+ is supplied in 225 Kgs drums, alternately bulk deliveries can be arranged.

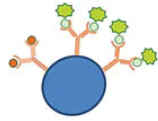
SHELF LIFE & STORAGE

Shelf life of RheoZeal admixtures is 12 months from the date of manufacture, when proper storage conditions are practiced.

RenderCrete BF 888+ shall be stored away from extreme temperatures under shade.

However, improper storage conditions like exposure to Sun etc, will accelerate deterioration and will reduce shelf life. Bulk tanks shall be cleaned once in a year to avoid deterioration due to development of yeasts etc. due to prolonged storage.

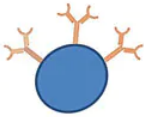
WORKING PRINCIPLE



Steric Hindrance

RenderCrete BF 888+ is formulated using the new generation PCE technology, where the working mechanism is based on Steric Hindrance.

It contains PCE blend of both main chains and side chains to provide water reduction and slump retention respectively.



When cement gets in contact with water and RheoZeal, these main chains and side chains steer away the cement and water particles away from each other causing dispersion and

CHLORIDE - CORROSION

RheoZeal admixtures do not contain any calcium chloride or other intentionally added chlorides. Therefore they do not initiate or propagate corrosion of the steel reinforcement present in the concrete.

Although IS 9103 and other international standards allow 0.2% of chloride in all admixtures, the total chloride content present in RheoZeal admixtures will be far too less than the above mentioned limit.

COMPATIBILITY

RenderCrete BF 888+ is compatible with all types of cements and supplementary cementitious materials like flyash, ggbs, microsilica, alcofine and other mineral admixtures.

RenderCrete BF 888+ is also compatible with most of the other types of chemical admixtures like air-entrainers, PCE based admixtures, accelerators, retarders, corrosion inhibitors etc under RenderCrete RheoZeal series.

Being a PCE based admixture, it is NOT compatible for use in concrete along with any naphthalene or melamine based admixtures.

If two or more admixtures are to be used in same concrete mix for any reason, they have to be tested in trials to establish performance. Each admixture has to be dispensed separately into concrete at all times.

CONCRETE-CURING

Proper curing is mandatory for all concrete to develop strengths and deliver expected performance. Especially in hot and windy climate, early curing the concrete is required to avoid plastic shrinkage.

RenderCrete SeizeKure is a specially formulated admixture for self-curing concrete besides avoiding plastic shrinkage in concrete. RenderCrete representative may be contacted for further details.

The information given is based on data and knowledge considered to be true and accurate and is offered for the user's consideration, investigation and verification. Since the conditions of use are beyond our control, we do not warrant the results to be obtained.

Regd Off: RenderCrete Chem Pvt. Ltd, First Floor, 6-2-47, AC Guards, Lakdikapool, Hyderabad, India – 04.

+91 90876 91234

mail@rendercrete.com

www.rendercrete.com